

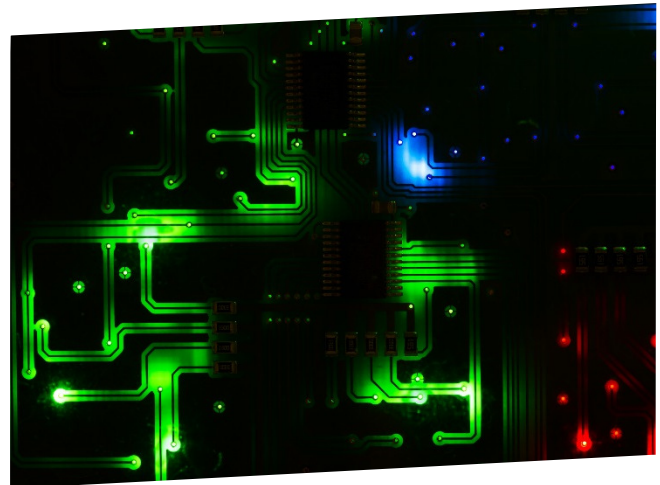


Information sheet

Side-LED Illumination

Features

- > Ultra-flat design with diffusing panels
- > Optional light separation between each key
- > Homogeneous key illumination
- > Bi-color or RGB LEDs for unlimited color selection
- > Back PCB available for custom electronics



LED technology combined with an ingenious design and composition allows for illuminated membrane switches, requiring only slightly more space than EL films. Long service life, brightness and single-key activation open up new application possibilities for the membrane keypad.

With professional illumination of the entire keypad, optimal safety in dark operating environments can be achieved. Pressure point keypads with tactile metals domes are no exception. Due to customization of the diffusing panel, almost all shapes and sizes can be illuminated. Feasibility will be confirmed during the beginning stages of each individual project.

Operation of the keypad is carried out through the diffusing panel. Color choices for a night design are available through the use of Bi-color or RGB LEDs.

Keypads with Side-LED illumination can be designed with a minimum installation height of 1.6 mm.

Specifications of Side-LED illumination

Thickness	Circuit carrier (w/o adhesive) >1.6 mm; keypad > 1.95mm
Operating temperature	-20 °C to +80 °C (+70 °C with embossed keys)
Power consumption	> 5 mA
Colours	Yellow, green, red, white, blue